

# Accessible and affordable digital education for everyone

## Ordering is quick and easy

1. Go to [easy4u.school/order](http://easy4u.school/order) and enter your login code:

**J9JGAK6**

Or click [HERE](#) to go directly to the webshop

2. Choose your device and select the term of your Easy4u Assurance Bundle
3. Opt to rent or purchase
4. Fill in all details and choose your payment option
5. You will receive an order confirmation by email

### Conditions for rent:

- ✓ Customer pays a deposit in advance equal to four rental periods (this does not apply in case of purchase)
- ✓ Option to buy at the end of the term against retention of the deposit amount
- ✓ Payment by direct debit (per month or per year)
- ✓ No credit rating assessment or registration needed

## Your School devices

Including the Easy4u All-in-1 assurance bundle



Please visit the webshop for more information



**Dell - Latitude 3140 2-in-1 touch**  
11.6" touch, 256GB SSD, Intel® Processor N200, 8GB RAM

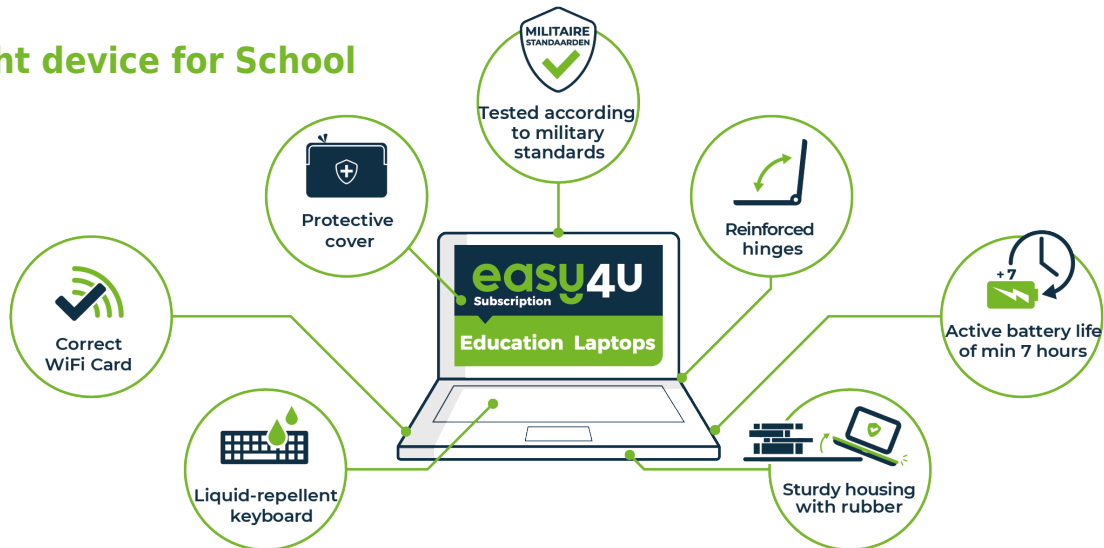
	<b>36</b> mth	<b>easy4U</b> Subscription	<b>48</b> mth	<b>easy4U</b> Subscription	<b>60</b> mth	<b>easy4U</b> Subscription
<b>19.90 rent p/mth</b>	<b>16.10 rent p/mth</b>	<b>13.80 rent p/mth</b>	<b>716.30 purchase</b>	<b>771.30 purchase</b>	<b>826.20 purchase</b>	

Prices are valid until the 31st of May 2024

# Accessible and affordable digital education for everyone

Our mission is to give every student access to digital education. We have developed the Easy4u Assurance Bundle to provide you with peace of mind, whether you rent or buy your device from us. Service, software and damage and theft coverage are all included in the prices quoted above. The School has selected the device best suited to your child's needs.

## The right device for School



**easy4u**

## All-in-1 Assurance Bundle

Standard with both **buy** and **rent**



Hardware

### Hardware

- Premium device for education
- Active battery life of at least 7 hours
- Fast and stable wireless internet through modern wifi connection
- Choice of the model has been agreed beforehand with the educational institution



Software

### Software

- The correct software for school is pre-installed
- Connecting to the school system (where applicable)



Service

### Service

- Replacement device for repairs, damage and theft
- Telephone, email and live chat support by customer service
- Battery warranty
- In-house repair service
- Service via school or home address during holidays
- Online customer portal
- Always one point of contact for the customer



Damage and theft coverage

### Damage and theft coverage

- Complete settlement by Class Technology Solutions
- Damage and theft cover with a limited deductible of £50.00 per event (max. 3)
- Including moistureproof protective cover

